

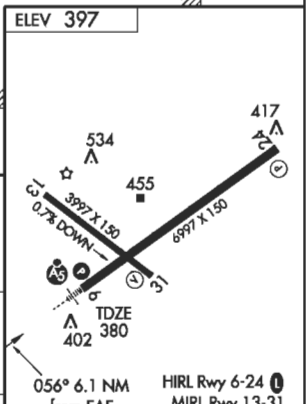
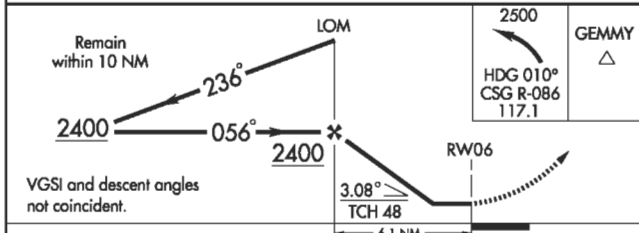
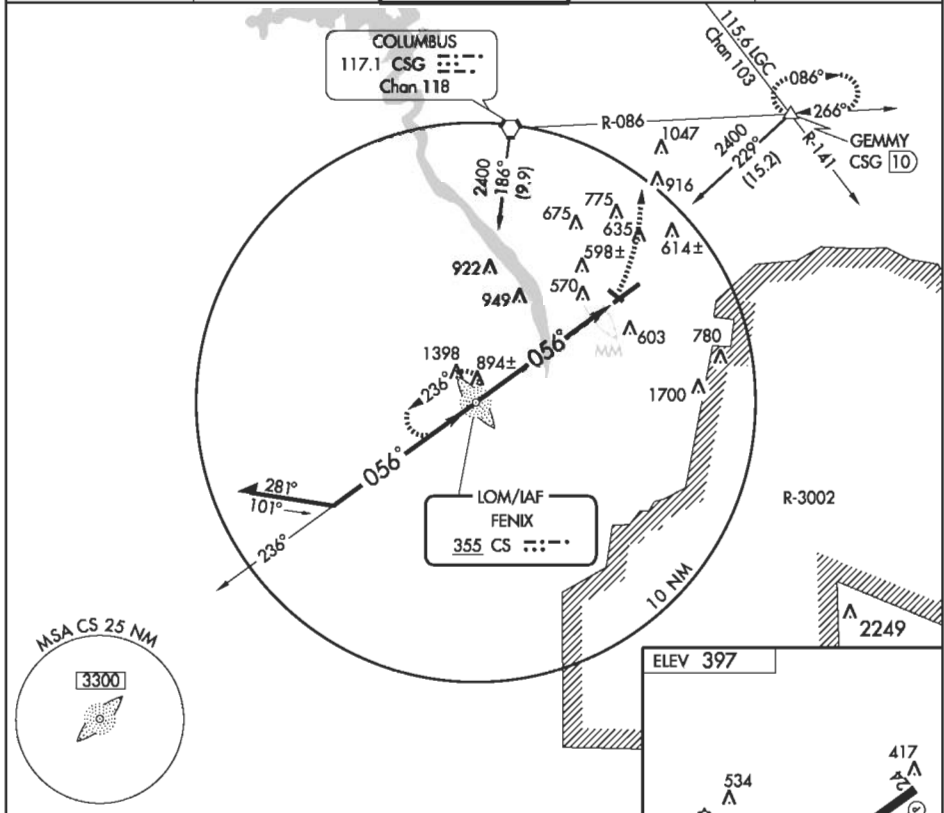
NDB RWY 6

COLUMBUS METROPOLITAN (CSG)

LOM CS 355	APP CRS 056°	Rwy Idg TDZE Apt Elev	6997 380 397
----------------------	------------------------	-----------------------------	---

		MISSED APPROACH: Climbing left turn to 2500 via heading 010° and CSG VORTAC R-086 to GEMMY Int and hold.		
		ATIS 127.75	ATLANTA APP CON* 125.5 323.1	COLUMBUS TOWER* 120.1 (CTAF) 257.8

ATIS 127.75	ATLANTA APP CON* 125.5 323.1	COLUMBUS TOWER* 120.1 (CTAF) 257.8	GND CON 121.9 348.6	UNICOM 122.95
-----------------------	--	--	-------------------------------	-------------------------



CATEGORY	A	B	C	D
S-6	1020/40 640 (700-34)		1020/60 640 (700-14)	1020-134 640 (700-14)
CIRCLING	1020-1 623 (700-1)		1020-134 623 (700-134)	1020-2 623 (700-2)

FAF to MAP 6.1 NM					
Knots	60	90	120	150	180
Min:Sec	6:06	4:04	3:03	2:26	2:02

SE-4, 09 JUN 2005 to 07 JUL 2005

SE-4, 09 JUN 2005 to 07 JUL 2005