

COLUMBUS, GEORGIA

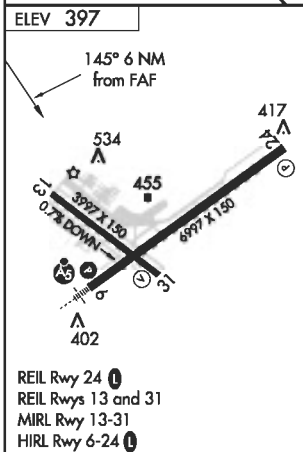
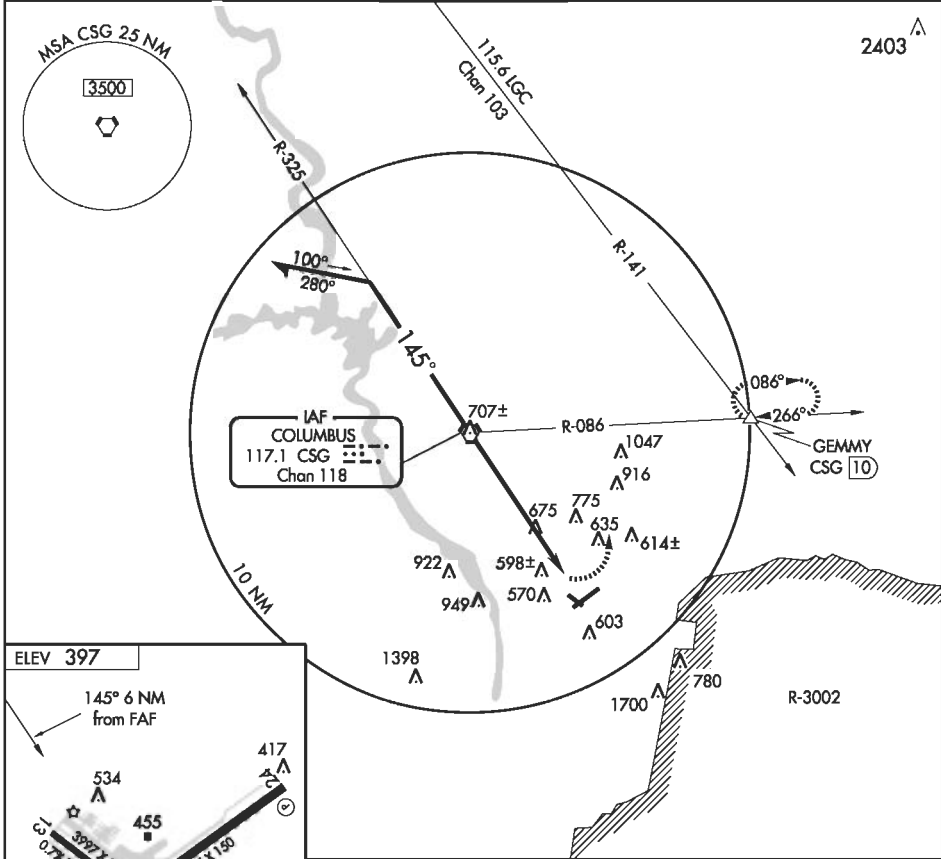
AL-636 (FAA)

**VOR-A**  
COLUMBUS METROPOLITAN (CSG)

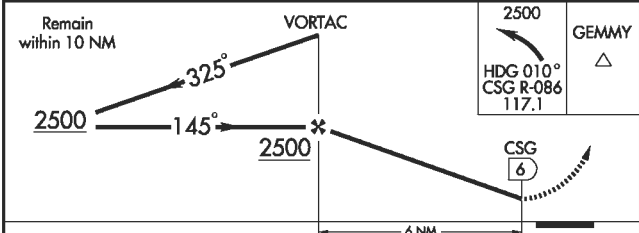
VORTAC CSG <b>117.1</b> Chan <b>118</b>	APP CRS <b>145°</b>	Rwy Idg TDZE Apt Elev	<b>N/A</b> <b>N/A</b> <b>397</b>
---	------------------------	-----------------------------	--

MISSED APPROACH: Climbing left turn to 2500 via heading 010° and CSG VORTAC R-086 to GEMMY Int and hold.

ATIS <b>127.75</b>	ATLANTA APP CON* <b>125.5 323.1</b>	COLUMBUS TOWER* <b>120.1 (CTAF) 257.8</b>	GND CON <b>121.9 348.6</b>	UNICOM <b>122.95</b>
-----------------------	--	--	-------------------------------	-------------------------



REIL Rwy 24  
REIL Rwys 13 and 31  
MIRL Rwy 13-31  
HIRL Rwy 6-24



FAF to MAP 6 NM								
Knots	60	90	120	150	180			
Min:Sec	6:00	4:00	3:00	2:24	2:00			
CATEGORY	A		B		C		D	
CIRCLING	980-1		583 (600-1)		980-1½		980-2	
					583 (600-1½)		583 (600-2)	

COLUMBUS, GEORGIA  
Amdt 23 05020

32°31'N - 84°56'W

COLUMBUS METROPOLITAN (CSG)  
**VOR-A**

SE-4, 09 JUN 2005 to 07 JUL 2005

SE-4, 09 JUN 2005 to 07 JUL 2005